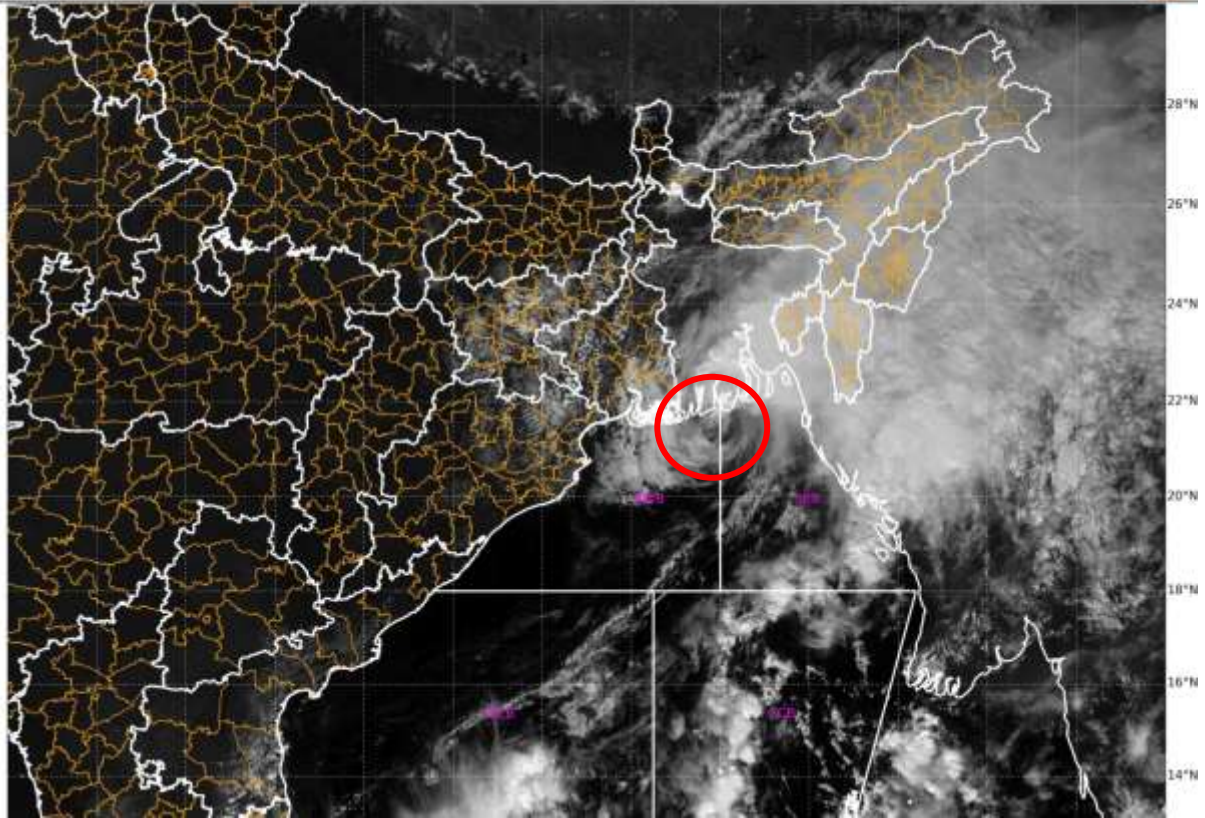


SATELLITE FIX BULLETIN

17.11.2023 TIME 0900 UTC

SAT : INSAT-3D IMG
Visible Count 0.65 um
LIC Mercator

17-11-2023/(0600 to 0627) GMT
17-11-2023/(1130 to 1157) IST



TCIN50 DEMS 170900

A. VORTEX (**MIDHILI**)

B. 17/0900Z

C. **21.7N**

D. **90.2E**

E. **T2.5/2.5**

F. INSAT-3D / 3DR / METOP B

F. VIS / IR / ASCAT

G. REMARKS:

(1) WATER VAPOUR IMAGERY AT 0600 UTC INDICATES A DEEP WESTERLY TROUGH AROUND LONG 85.0E TO THE NORTH LAT 16.0N (WEST OF SYSTEM) DUE TO WHICH SOUTH-WESTERLY WINDS SUPPORTS THE NE MOVEMENT OF THE SYSTEM DURING PAST 06 HRS.

(2) IR IMAGERY SHOWS INTENSE CONVECTIVE CLOUD MASS SHEARED TO THE NE SECTOR OF THE SYSTEM CENTER AND LIES OVER EASTERN BANGLADESH NE STATES AND NORTH MYANMAR HAVING CTT MINUS 80 DEGREE CELSIUS. IR IMAGERY ALSO SHOWS POLEWARD OUTFLOW OF SYSTEM OVER NORTHERN PART OF THE SYSTEM COVERING BANGLADESH AND NORTH-EAST STATES.

(3) SHEAR PATTERN, DISTANCE OF ABOUT 70 KM BETWEEN LLCC AND NEAREST CONVECTIVE EDGE (< 0.75 DEGREE RULE 2b) YIELDS DT 2.5. PT 2.5 MET 3.0 (2.0 + 1.0). FT BASED ON DT. PT SUPPORTS FT.

(4) ASCAT METOP B PASS AT 03:20 UTC SHOWS MSW UPTO 40 KTS NEAR BANGLADESH COAST OVER NORTH BAY.

H. ADDITIONAL POSITION:

ASCAT METOP B 03:20 UTC 21.0N / 89.2E

TOO 17/1550 EF=

NNNN